

# GREENWELL ENERGY SOLUTIONS®

## New API 6A and 16A Oilfield Equipment



### Quality oilfield equipment that's immediately available for an affordable price enables operations to continue without lost time and missed revenue opportunities.

Greenwell Energy Solutions enables clients to keep their customers' drilling and production schedules on track. As a wholesale distributor of new API 6A and 16A equipment for drilling, completions and production of oil and gas throughout the world, we are a critical partner for many of the top tier wellhead and frac valve rental companies.

Our standard equipment line of products includes gate valves of all sizes, FRAC components, drill through equipment and valve replacement parts that all adhere to industry-design standards and certifications.

Access to substantial capital and extensive logistical experience ensures we have more equipment in stock and can deliver it faster than other providers in the market. Over 90 customers have come to count on us for our responsiveness and equipment availability.



### Services

- 24/7 inquiry and ordering availability
- Rental program for select items on demand
- Long-range planning and forecasting to reduce costs
- Client training available
- Detailed, legible and comprehensive Material Traceability Records (MTR)
- Certificate of Compliance (C of C) available upon request
- Up-to-date manufacturer API licenses and ISO certificates available upon request

### Advantages

- Extensive inventory: 1000's of parts on hand
- Fast delivery: made same day or next day
- Forecasting using low cost supply chain management
- Strong safety focus and record

### Experience That Counts

- Combined 70 years of experience with wellhead and FRAC iron
- Delivered equipment to 12 U.S. states and 6 countries
- Serving over 90 customers and growing



**GREENWELL**  
ENERGY SOLUTIONS

Impacting Efficiency™

**41232 Park 290 Drive** (832) 241-9655 Office  
**Building A** (832) 241-9657 Fax  
**Waller, TX 77484**

[www.greenwellsolutions.com](http://www.greenwellsolutions.com)



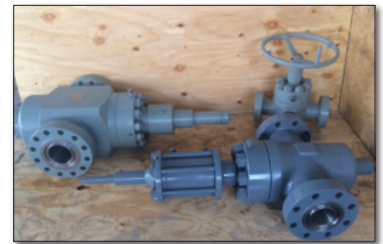
### API 6A and 16A Products

Greenwell specializes in fracture-related products for well control and flowback. Big bore, full open valves and components stack up directly on top of the wellhead and control pressures from the wellbore during frac and flowback. We also stock the unique and hard to find zipper manifold components such as big block tees and crosses for 5-1/8" 10M up to 7-1/16" 15M working pressures.

Hard-to-find full open spools of all flange sizes up to 10 feet long and 'INTEGRAL' (no welding) available with purchase order.

### Gate Valves

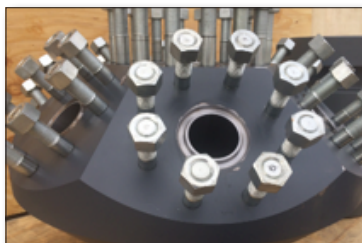
- API 6A gate valves in slab-gate design. We provide a range of materials and classes from general to sour service with focus on manifold and frac applications.
- API material class DD, EE and FF valves, with Stainless Steel internals and Tungsten Carbide hard faced for high pressure fracturing service.
- Size Range: 1-13/16" to 7-1/16" and working pressure 2,000 to 15,000 psi.



### FRAC Components

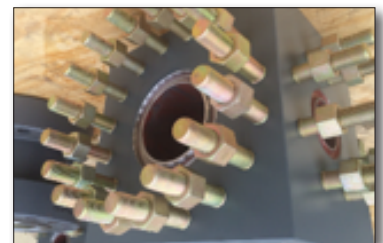
#### Goat Heads/ FRAC Heads

**Size Range:** 4-1/16" to 5-1/8" to 7-1/16" and working pressure 10,000 to 15,000 psi.



#### Tees and Crosses

**Size Range:** 2-1/16" to 7-1/16" and working pressure 5,000 to 15,000 psi.



#### Blind Flanges, Adapter Spools, Spacer Spools, DSAs

**Size Range:** 1-13/16" to 13-5/8" and working pressure 2,000 to 15,000 psi.



#### Repair Parts - On Hand Inventory

FC, FLSR, and most other common manufacturers

**Size Range:** 1-13/16" to 7-1/16" and working pressure 2,000 to 15,000 psi.

